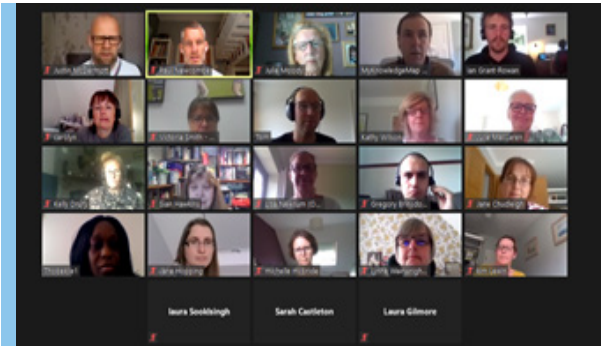


# Newsletter No.11



The virtual ePAD Workshop, 3rd June 2020

## Pan London e-PAD: Project Update

Design and development work on the new pan London ePAD, has been progressing rapidly over the last few months. We are working closely with the team at MyKnowledgeMap to ensure that the pan London ePAD look and feel and capability meets the needs of our students, practice partners and academics.

We have held three further Zoom workshops with students, academics, and our placement team administrators. All the workshops were very valuable in getting timely input into the design of the system and the overall feedback was very positive. Our thanks to all those who attended.

We had delayed wider involvement with practice due to coronavirus measures being in place but were able to facilitate a practice-focused review on 15th July. There was a lot of interest and we received both positive and constructive feedback from colleagues. Throughout July and August we moved to the testing stage.

We have facilitated a number of these events to support testing with practice and academic staff as well as students and the practical activities undertaken have helped us get ready for the planned September implementation.

Our practice learning leads from the five universities who are implementing the ePAD in 2020/21 have been having discussions with their practice partners to support a successful implementation. They are currently making sure that placement area information is up to date and that training is scheduled in online sessions for staff and students so they are ready for the new system.

Students from the University of Roehampton are first to use the ePAD from September, followed closely by students from City University of London, Kings College London, Middlesex University (throughout October and November) with University of Greenwich introducing the ePAD in early 2021. Other London universities are planning to implement the ePAD from September 2021.

### PLPLG

#### PAN LONDON PRACTICE LEARNING GROUP

Founded over 15 years ago, PLPLG represents 14 AEI in and around London. They meet throughout the year to develop, support, monitor and evaluate a standardised London wide approach to practice learning

[www.plplg.uk](http://www.plplg.uk)

## PL ePAD Project

Supported by HEE London

### Co-sponsors

Kathy Wilson, PLPLG Chair  
[K.Wilson@mdx.ac.uk](mailto:K.Wilson@mdx.ac.uk)

Nicki Fowler, PLPLG Vice-Chair  
[N.Fowler@greenwich.ac.uk](mailto:N.Fowler@greenwich.ac.uk)

### AEI Leads

Julie McClaren  
[Julie.MacLaren.1@city.ac.uk](mailto:Julie.MacLaren.1@city.ac.uk)

Julie Bliss  
[Julie.Bliss@kcl.ac.uk](mailto:Julie.Bliss@kcl.ac.uk)

Justin McDermott  
[J.McDermott@mdx.ac.uk](mailto:J.McDermott@mdx.ac.uk)

Paul Newcombe  
[Paul.Newcombe@roehampton.ac.uk](mailto:Paul.Newcombe@roehampton.ac.uk)

### Practice Partners

Lisa Newsum, Oxleas NHS Foundation Trust  
[Lisa.newsum@nhs.net](mailto:Lisa.newsum@nhs.net)

Ruth Sivanesan, Guys & St. Thomas' NHS Found'n Trust  
[Ruth.Sivanesan@gstt.nhs.uk](mailto:Ruth.Sivanesan@gstt.nhs.uk)

### Project Manager

Sarah Castleton  
[Sarah.Castleton@kcl.ac.uk](mailto:Sarah.Castleton@kcl.ac.uk)

### Project Administrator

Gregory Brinsdon  
[G.Brinsdon@mdx.ac.uk](mailto:G.Brinsdon@mdx.ac.uk)

### MyKnowledgeMap

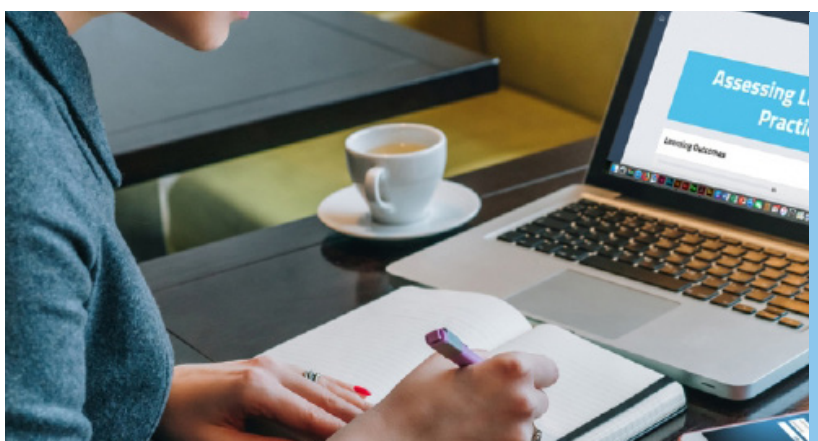
Paul Mahoney  
[Paul.Mahoney@myknowledgemap.com](mailto:Paul.Mahoney@myknowledgemap.com)

Tom Holland  
[Tom.Holland@myknowledgemap.com](mailto:Tom.Holland@myknowledgemap.com)

## Looking forward to a new academic year

The PLPLG wish to express our huge thanks to all of those that have been involved in the project to date and are excited to continue to work with all partners for a successful implementation. We will keep you updated on our progress.

We would also like to extend our appreciation to all practice colleagues who have provided support to the large number of students deployed across London during the COVID-19 emergency period. We look forward to continuing to explore new ways of working throughout this new academic year as we plan placements for those students who have missed placement opportunities during this period and in supporting the new HEE expanded targets for 2020.



### Staff Preparation

If you are planning any staff events that would provide a suitable occasion for an overview and demo of the PL e-PAD please let us know.

Or if you'd like any further information about the project please contact [sarah.castleton@kcl.ac.uk](mailto:sarah.castleton@kcl.ac.uk).

### Resources

Resources to support the implementation of the Standards to Support Supervision and Assessment and the use of the PLPAD can be found on the PLPLG website. Additional resources to support the implementation of the ePAD will be added soon.

